

Sunday Services

Evening services are at 6.30pm unless otherwise shown.

February

- 1st Len Ward
Rev Keith Page
- 8th Colin Turner
Local Arrangement (Hymn singing)
- 15th Brenda Gutberlet (S) (*liable to change*)
Bob Clipsham
- 22nd Babs Ward
No Evening Service - Circuit Service at Thorpe Bay, 6.30

March

- 1st Len Ward
Bryan Imbush
- 8th Jim McAvoy
Brenda Gutberlet
- 15th Brenda Gutberlet (S)
No evening service at Rochford - at Rayleigh for Guild Anniversary, 4pm
- 22nd *Mothering Sunday*
Local Arrangement
Brenda Gutberlet
- 29th John Phillips
Brenda Gutberlet (S) at 5.30 (follows 4pm General Church Meeting)

There may be changes from the Circuit Plan - the ones above are correct at the time of printing. All services are subject to change at short notice - see your printed notices for up to date information each Sunday.

Dates for your diary:

March

- 6 Women's World Day of Prayer - service at the Congregational Church
- 7 Farmer's Markets start at WI Hall for 2009
- 14 *A Year in the Life*, Rayleigh
- 26 Visit to *Calamity Jane* at Cliffs Pavilion
- 29 **General Church Meeting, 4pm.** The evening service follows immediately afterwards.
- 29 Start of British Summertime - clocks go forward

April

- 5 Family Day
- 6 *Stations of the Cross* service, St Teresa's, 8pm
- 9 Afternoon service at Hockley Sisterhood - all invited, including men
- 9 Maundy Thursday service at Hockley, 8pm
- 10 *Silent Walk of Witness*, Hockley, Starting outside Somerfield, 11am
- 19 Women's Fellowship Anniversary
- 19 **Last date for items for the Newsletter**

May

- 3 Next planned publication date of Newsletter
- 16 Coffee Morning for Nigeria Healthcare at 130 Ashingdon Road
- 17 Church Anniversary, Rev Martine Stemerick

June

- 6 *Food, Faith, Fun and Flowers* event at Rayleigh Methodist Church

July

- 12 Family Day and Picnic in the Park

August

- 8 *Summer Fayre*, 8 Dalys Road

Rochford Methodist

The **Methodist Church** 



The clocks go forward on 29th March!

Don't forget to give Dave your reports for the General Church Meeting ASAP.

Feb/Mar 2009

The Newsletter of
Rochford Methodist Church
77-79 North Street
Rochford
SS4 1AD

Rochford Methodist Church is a member of **Southend and Leigh Circuit**, part of the **Beds, Essex & Herts District**

www.rochfordmethodist.org.uk



THE EXTRA FOOLISH MAN BUILDS HIS HOUSE ON THE SAND, USING SAND



SORRY THIS IS A CHRISTIAN BOOKSTORE ... IT'S ALL NON-FICTION

News from Brenda's three churches

The stewards at Brenda's churches meet once a quarter to thrash out the Quarterly Plan for our Section of the Circuit, arrange common activities, and to share ideas and news. Here are some highlights from the last meeting.

Talking of stewards, are you interested in finding out more - perhaps 'shadowing' our stewards to find out what it involves. In a year or two's time we will need a new steward as Margaret's 6-year term of office comes to an end and you might find it an interesting job to do.

At the last meeting Brenda announced she was due to go into hospital and you should be aware that she stayed in for a couple of days. However, she will be off work until at least 16th February. If you need to contact a minister while Brenda is away, the first 'point of contact' is Sue Manning and, if she is not available, Keith Page.

Lent Lectures. This year Chris Cousins and Tim Clay (the C of E Rectors in the area) will be holding a series of talks to which we have been invited. Details to follow.

Len Ward. This is a warning that Len may be leaving us shortly. Without going into too much detail, Len's contract officially ran out on 31st January. He and Babs have been living rent-free in a Circuit ex-manse in lieu of a housing allowance, but the Charity Commissioners are now insisting that they pay a 'commercial rent'. Len's contract has been extended under the old terms for a further 3 months while a solution to the situation is identified (if possible), but the 'commercial' rent for properties in the area is high and finding suitable affordable accommodation is difficult. Please pray for Len and Babs during this period of uncertainty.

Rev Norman Hooks. Norman had an accident recently when he fell out of his loft. He is currently off work.

'Food, Faith, Fun and Flowers' Following on from the HoHoLympics last year, the three churches will be holding a 'Food, Faith, Fun and Flowers'

The next planned publication date is 3rd May 2009. Articles, etc, should be with Dave by 19th April please.

I prefer articles by email, floppy disc or typed with a good DARK original (because I can handle these without re-typing them!), but I am happy to receive them in any form — so long as I get *something*!

Emails can be sent to me at either of the addresses shown in the box on the right.

The **Rochford Methodist** is published on behalf of Rochford Methodist Church. Opinions expressed in this newsletter may not be those of the Methodist Church.

Minister:

Revd Brenda Gutberlet, 259 Eastwood Road, Rayleigh, Essex, SS6 7LF (01268) 770333.
Email: brendagutberlet@btinternet.com

Editor:

Dave Dobbin, 130 Ashingdon Road, Rochford, Essex, SS4 1RR (01702) 544096
email: dvdobbin@aol.com or rochfordmeth@aol.com

What goes on at Rochford Methodist Church?

Sunday

10.55 am FJ Club
10.55 am Morning Service
6.30 pm Evening Service

Monday

2.30 - 4.30 pm Women's Fellowship (Sept - May)
7.15 - 8.45 pm *Blossom on the Oasis.*

Tuesday

9.30 - 11.30 am *Happy Hands* Baby and Toddler Group
12.00 - 2.00 pm *Happy Hands* Baby and Toddler Group
3.00 - 7.30 pm Hildale School of Dancing
8.00 pm Wesley Guild (Oct-Apr)

Wednesday

7.00 - 10.00 pm Alcoholics Anonymous

Thursday

9.30 - 11.30 *Music Dreams* (for 0-2 years)
3.45 - 7.30 pm Hildale School of Dancing
7.30 - 9.30 pm Table Tennis

Friday

8.00 pm Rochford Floral Group (2nd Friday of month)

Saturday

9.00 am - 3.15 pm Hildale School of Dancing

The premises are available for use outside the above times. Contact Margaret Rayner on 544252 for more information.

And in addition . .

Two open House Groups meet each month in a different place each time. One usually meets on the 1st Wednesday of the month and the other on the 3rd Wednesday. Look in the weekly notices for the dates and venues. A third House Group is for newer members of the Church and is by invitation only.

MY FAVOURITE THINGS—FOR THE OLDER PERSON

Statins and nose drops and needles for knitting,
Walkers and handrails and new dental fittings,
Recycled newspapers tied up in strings
These are a few of my favourite things.

Prescriptions and cataracts and hearing aids and passes,
Polident and Fixodent and dentures in glasses,
Pacemakers, zimmers and porches with swings.
These are a few of my favourite things.

When the pipes leak, when the bones creak
When the knees go bad.
I simply remember my favourite things
And then I don't feel so bad.

Hot tea and crumpets and corn pads for bunions,
No spicy hot food, or food cooked with onions,
Dressing gowns, heat pads and hot meals they bring.
These are a few of my favourite things.

Back pains, confused brains and no chance for sinning,
Thin bones and fractures and hair that is thinning,
And we won't mention our short, stunted frames
When we remember our favourite things.

When the joints ache, when the hips break
When the eyes grow dim.
I simply remember the great life I've had
And then I don't feel so bad.

Sung by Julie Andrews, celebrating her 69th birthday, at Manhattan's Radio City Hall. She received a standing ovation.

event on Saturday 6th June 2009. This will take place at Rayleigh church. Details are now being discussed, but the current suggestions are:

- The flower groups from each church will be invited to decorate two window ledges of the church.
- We will be seeking sponsorship for the event.
- Each church will have two or three tables, for games, sales, etc and each church will keep whatever they raise on their stalls.
- Flower arranging demonstrations will be organised, possibly including a 'professional' arranger.
- Activities for children will include simple cookery experiences.

Any other ideas that fit the general theme will be welcomed, but if you want to suggest something let Margaret (or one of the other stewards) know in time for the planning meeting on 21st February.

'A Year in the Life'. An idea that has been successful in many churches is to record one year's activity of your own church (including all the users of the premises as well as church meetings) and to set up an exhibition to present it to the membership of the church and to the community at large.

Rayleigh are presenting their 'year' at an exhibition on 14th March and everyone is welcome to go along to find out more. John Lorrimore (one of the Rayleigh stewards) will also be coming to the Guild on 24th February to tell us what they did. Hockley will be presenting theirs in the Autumn.

All organisations that meet in our church are to be invited to record what they do throughout 2009 so they can be part of the exhibition in Spring 2010.

Good Friday. The churches in Hockley invite us to a 'Silent Walk of Witness'. They will meet outside Somerfields in Hockley at 11am and process to Bramerton Road UR Church where there will be a short service and refreshments. There are no age restrictions (at either the top or bottom end of the range) and everyone is welcome to attend.

All-night prayer vigil. Rayleigh churches are thinking about holding an all-night vigil at some time this year. No details yet, but Hockley and Rochford are also invited.

Worship Leader courses. The next course is expected to be held in Spring 2010. Further details nearer the time, but if you feel you want to take part in this worthwhile task in the church, have a word with a Worship Leader. If you want to 'try before you buy', have a word with Mike and you may be able to help in the planning and leading of a Local Arrangement to find out what is involved.

The next 3-churches stewards meeting will be held on 18th March when we will finalise our requirements for the June/August quarter of the Circuit Plan and start to pencil in dates for the September/November quarter, **and Christmas**. So let the stewards know as soon as possible what your part of the church wants to do over the next 9 months!

Tiddlers

Over the last year we have managed to collect £125.00. We have sent three lots of money to the MDRF totalling £75.00 and I have sent £25.00 to *Fair Havens Hospice* and the last £25.00 went to the *Hospice at Home* service that runs in south east Essex and is run totally from voluntary contributions.

Over the last year we have collected slightly less than previous years but I think some of that is from where we have lost older members of the congregation that used to collect, so we need to continue to try and encourage some of the younger members to collect. If you have any charity that you think may benefit from a donation from the Tiddler fund then please let me know.

I have placed a box in the FJC cupboard marked *Tiddlers* and this will be placed at the back of the Greaves Hall after church each week. Any donation can be placed in the box, either in bags or just a couple of coppers from your purse or trouser pocket will be counted and added up. As the saying goes 'look after the pennies and the pounds look after themselves'.

Well here's hoping that the new box will help to increase our Tiddler fund.

Many thanks to those who already collect and I hope that it has given those of you who don't something to think about

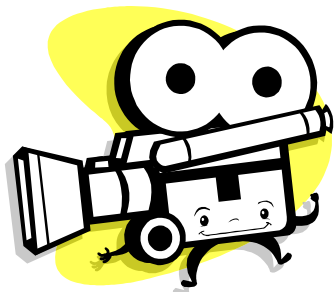
Andrea

Fancy a good film?

Our friends at Hadleigh Methodist church hold a monthly film show in their church. If you're interested, keep your ears and eyes open for the next one.

Admission is free but voluntary contributions are welcomed. The evening starts at 7pm with light refreshments so the film can start promptly at 7.30pm.

Recent showings have included the classic James Stewart film *It's a wonderful Life* as well as the more recent offering *Mamma Mia!*. Future showings include *The Sound of Music*.





Your Local Havens Hospices Charity Shop **Urgently** needs your support

Have you got good quality saleable items to donate?

- Books
- Bric-a-Brac
- DVD's
- Clothing
- New Goods
- Unwanted Gifts
- Toys
- Shoes



A simple way to support Havens Hospices in the current financial climate. Your kindness will support hundreds of families in your local community needing our support.

Thank You

www.havenshospices.org.uk Registered Charity Number 1022119

Our nearest local shops are in Spa Road (Hockley), High Street (Rayleigh), Alexandra Street (Southend), London Road (Hadleigh), London Road (Westcliff), Southchurch Road (Southchurch), Leigh Road (Leigh-on-Sea)

Wesley Guild

Christmas went well and seemed to be appreciated. And we have started 2009 with a good range of speakers. On 6th January, Bob Clipsham told us about how he was led into being a Local Preacher after moving to Cornwall as part of his job. There was a quiz on the 13th led by Colin and Margaret to exercise our grey cells.

On the 20th, Andrew Hill told us a bit about the work of the Community Police Support Officers. As Mark Stacey was busy packing up after a hectic day's auctioning at the Freight House, his father Peter came along and told us something about the business of running an antiques business and he valued some items brought along by our members - with some pleasant surprises!

February

- 3 Rev Sue Manning (in the event, this was cancelled due to the weather)
- 10 *Quiz with a difference*
- 17 *Helping Young Revellers* - the SOS Bus, Andrea Haslam
- 24 *A Year in the Life* - recording the life of our Church, John Lorrimore

March

- 3 Rev Diane Smith
- 10 *The Birth of Electricity*, Roy Pavitt (a change from the advertised programme)
- 15 (Sunday) We visit Rayleigh Guild for their Guild Anniversary, 4pm
- 17 *Healthcare on a ship*, Mercy Ships International, Sandy Burnett
- 26 *Calamity Jane* - visit to the Cliffs Pavilion (change from the advertised programme)
- 31 Rev Keith Page

Women's Fellowship

The Spring Session is under way and (barring snow and ice) we're having a great time with an interesting range of speakers and topics.

If you are free on a Monday at 2.30pm, why not come along to the church. There will be a warm welcome and a cup of tea waiting for you.

February

- 9 Gwenda Andrews
- 16 Joan Clark
- 23 Babs Ward

March

- 2 Cecile Low
- 9 Rev Michael Hayman
- 16 Re Brian Gameson
- 23 Pam Freeborn
- 30 Maureen Sams

Just what *is* the "Assessment"?

Last time Colin gave us the news that to pay our Assessment, we have to pay to the Circuit the equivalent of £6.50 for each member of Rochford Methodist Church. That's £6.50 *each week*, whether or not you are actually at a service.

So what do we get for our money? Where does it go?

The structure of Methodism in the UK

The country is divided into Districts, overseen by a Chair of the District (similar to a bishop in the Church of England). Revd Ann Smith is our Chair and she is in charge of the Bedfordshire, Essex and Hertfordshire District. The Chair will usually have a lay (non-ministerial) assistant to help with general office work and they may or may not be paid.

The District is divided into Circuits, each looked after by a Superintendent, and each Circuit is divided into groups of churches (called 'Sections') which are looked after by a minister. Sue Manning is the Superintendent of Southend and Leigh Circuit and Brenda, of course is our minister - and we share her with the Hockley and Rayleigh Methodist Churches.

Financing the Ministry

Each minister has to be housed and paid, as well as payments being made into a pension fund, and they will have other expenses such as phone calls. This is for a 6-day week when many people expect a minister to be available 24 hours a day.

The Circuit pays these costs, along with a share of the cost of running the District, on behalf of the local churches from the Circuit Fund - a centralised pot of money.

There will also be other things for the Circuit to pay for. You can't manage property (eg, the manses) without having to pay for repairs, maintenance, annual gas inspections, etc, as required under law. Then there's printing the Circuit Plan, training courses and other expenses.

And where does this money come from? From us, the person in the pew.

The calculation

Each year the Circuit Treasurer calculates how much he thinks the Circuit will cost to run. This cost is then shared out to each church based on its proportion of the whole Circuit membership. This time around the Circuit Treasurer has calculated he will need about £325 for each member for the year - that's the £6.50 a week Colin told us about.

So, as our membership just over about 50, as a church we need to raise an average of about £325 a week just to pay this Assessment, which is the first priority for any church income through the Offertory under Methodist rules.

We recognise that not everybody can pay the whole £6.50 each week, but we are asked as Methodists to examine our own giving and give as realistically as we can. Anyone who *can* give a little more will help to offset someone who can't.

The Envelope Scheme helps you to keep track of the weeks you have missed and the Gift Aid scheme allows us claim back the income tax you have paid. If you want to join either, please see a steward.

Be a Smart Alec . .

. . and help the world's poorest people.

We have had an invitation from Christian Aid to take part in *Quizaïd*.

But we need someone to organise a local quiz evening on or about 14th May when the rest of the country will also be taking part.

At its simplest, Christian Aid will provide the questions and we provide the people and the accommodation. Any more than that is up to you.

If you want to organise one at Rochford Methodist Church, have a word with Dave and he will pass on the invitation which tells you how to register for the Question Pack.

Did you know?

There are nine ranks (or Choirs) of angels.

They are:

Seraphim
Cherubim
Ophanim
Thrones
Dominions
Principalities
Powers
Angels
Archangels



Although Archangels are usually thought to be at the highest level there has never actually been a hierarchy.

Keep yourself and your valuables safe

Following Andrew Hill's visit to the Guild, we have a small supply of literature on keeping yourself and your home safe. We also have free keyrings, security chains for purses and security marker pens for your household valuables .

These are on the table in the Vestry, so feel free to help yourself.

A Call to Prayer for our nation 2 Chronicles 7:14

A regular ecumenical event at Ashingdon Free Church

Last Friday of each month during 2009, 8-10 pm

Refreshments and Parking available

Next meetings:
27 February
27 March

A Yorkshireman takes his cat to the vet:
Man: "Ah've come to see thee abaht me cat."
Vet: "Is it a tom?"
Man: "Nay lad, I've browt it wi' me."

Despite what we have frequently been told, you actually use 12 muscles in your face to smile and 11 to frown.



February

- 7 Malcolm & Pat Rubidge, John & Marian Webb
- 14 BIG CLEAN (Cleaning, repairs and a 'faith lunch')
- 21 Colin & Margaret Rayner, Ron Castle
- 28 Bruce & Carole Glendenning, George & Sue Edwards

March

- 7 Mike & Heather Sims, Jan Willson, Sandra Hull
- 14 Judy Garner, Rosie Isaacs, Maureen Whalley, Ivy Blenkinsop, Sheila Webber
- 21 Dave & Val Dobbin, Roy & Olive Pavitt, Gwenda Andrews
- 28 Malcolm & Pat Rubidge, John & Marian Webb

February

- 1 Margaret Stoll
- 8 Sheila Webber
- 15 Marie Denny
- 22 Sue Edwards



The current rota has now run out and Beryl is in the middle of creating a new one. If you want to fill one of the gaps, or want to know more about how it works Beryl would be glad to see you - but do it now before you're too late.

Our Prayer Chain goes from strength to strength!

The Prayer Chain is a group of people who will pray for you for a **specific** and **urgent** reason. If there is something, or someone, in your life that you feel needs praying for, let Heather know and she will contact the other members.

Do you want to be part of the Chain and add to the life of our church? If so, have a word with Heather.

There is only one commitment. If you get a call from another member on the chain, you pray for the subject and call the next person in the chain. You don't have to wait in, and you don't have to go anywhere.