

## Sunday Services

Evening services are at 6.30pm unless otherwise shown.

### June

- 4th Brenda Gutberlet (S)  
Bruce Glendenning (LA)  
11th Len Ward (AAW)  
Graham Hindle (last service before he leaves the Circuit)  
18th Eric Rowe  
Dave Dobbin (LA)  
25th Bert Fuller  
Brenda Gutberlet

### July

- 2nd To be arranged  
(7pm) Circuit Farewell Service at Rayleigh (See *Dates for your diary*)  
9th Family Fun Day  
No evening service  
16th Colin Turner  
Andy Thomas  
23rd John Phillips  
Brenda Gutberlet  
30th Jean Pickering  
No evening service

*Some of the services are different from the Circuit Plan - the ones above are correct at the time of printing.*

*But all services are subject to change at short notice - see your printed notices for up to date information each Sunday.*

## Dates for your diary:

### July

- 1 Bradwell Pilgrimage  
2 Circuit Farewell Service for Graham Hindle and Vincent Canning, 7pm  
1-2 *Open Gardens at Bensfleet*  
22 NCH Street Collection, Rochford and Golden Cross  
30 Fund-raising event

### August

- 31 Induction of new Chair of the new District. Chelmsford Cathedral, 7pm

### September

- 2 Circuit welcome service  
12 Circuit Meeting, New Road, 8pm  
24 Harvest Festival

### October

- 15 *Pilgrims Way* Review/Progress Report  
28 *Clocks go back*

### November

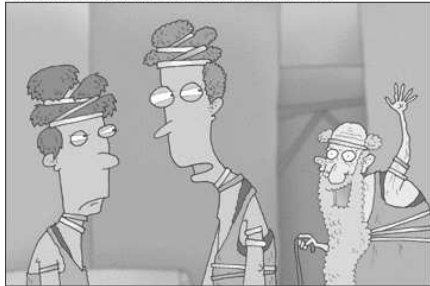
- 15/18 *The King and I*, Cliffs Pavilion (SODS)

The camel never sees its own hump  
but its neighbour's hump is ever before  
its eyes.

Arab Proverb

Dear God, help me get up;  
I can fall down by myself

REVERENDFUN.COM COPYRIGHT GQ, INC.



Thanks to Tim  
MAN, DON'T YOU HATE IT WHEN DUDES OVER  
NINE HUNDRED STILL TRY TO ACT ALL COOL?

REVERENDFUN.COM COPYRIGHT GQ, INC.



Thanks to Holly Tucker Schneider  
OOH LOOK, THAT RIVER RESEMBLES THE  
SERPENT FROM THE GARDEN OF EDEN ... AND  
THAT MOUNTAIN KINDA LOOKS LIKE MOSES'  
OLD TENT PEG

The Methodist Church 

# Rochford Methodist

**Don't forget to bring your  
friends and family to the  
Family Fun Day on 9th  
July.**

**See page 4.**

## June/July 2006

The Newsletter of  
**www.rochfordmethodist.org.uk** **Rochford Methodist Church**

North Street  
Rochford  
SS4 1AD

Rochford Methodist Church is a  
member of **Southend and Leigh  
Circuit**, part of the **London North  
East District**

## Get it first, get it late

If you want to get your copy of the *Rochford Methodist* before anyone else does, let me know your email address and I will add you to the mailing list - you will get it soon after I finish the final 'camera-ready' copy. It will arrive at some unearthly time of the night (probably), but you will be able to read it, print it, or forward it to someone else

To read or print your own copy you will need Adobe Acrobat Reader but this is normally on everyone's PC so you probably don't need to load any extra software. However, if you haven't got it or you want a later version, let me know and I can advise you on how to get a copy that is risk-free, legitimate, and costs you nothing. Copies of Adobe Reader is usually available on cover mount CD/DVDs on PC magazines.

\*\*\*\*\*  
**Summer Fayre**  
 \*\*\*\*\*  
 \* At the last count, this year's Summer Fayre raised £880. With our benefactor \*  
 \* doubling this amount, this means we now have another £1760 towards \*  
 \* clearing our debt on the building works. We would like to thank Pat and \*  
 \* Malcolm for all their efforts in organising and running the event - and for all \*  
 \* those who helped and took part. \*  
 \*\*\*\*\*

If you have passed 130 Ashingdon Road recently you might have seen the contents of our bathroom outside. We are having the bathroom refitted, so the bath, basin and toilet have been taken out. While the old toilet was waiting to be taken to the tip, somebody walked off with it. We have no idea who took it and we have nothing to go on.

The next planned publication date is 6th August 2006. Articles, etc, should be with Dave by 23rd July please.

I prefer articles by email, floppy disc or typed with a good BLACK original (because, being lazy, I can handle these without re-typing them), but I am happy to receive them in any form—so long as I get something from you!  
 Emails can be sent to me at either of the addresses shown in the box on the right.

The **Rochford Methodist** is published on behalf of Rochford Methodist Church. Opinions expressed in this newsletter may not be those of the Methodist Church.

**Minister:**  
 Revd Brenda Gutberlet, 259 Eastwood Road, Rayleigh, Essex, SS6 7LF (01268) 770333.  
 Email: brenda@canvey.com (not for urgent messages)

**Editor:**  
 Dave Dobbin, 130 Ashingdon Road, Rochford, Essex, SS4 1RR (01702) 544096  
 email: dvdobbin@aol.com or rochfordmeth@aol.com

## What goes on at Rochford Methodist Church?

### Sunday

11.00 am FJ Club  
 11.00 am Morning Service  
 6.30 pm Evening Service

### Monday

2.30 - 4.30 pm Women's Fellowship (Sept - May)  
 7.00 pm *Blossom on the Oasis* (Ladies Dancing Group)

### Tuesday

9.30 - 11.30 am *Happy Hands* Toddler Group  
 12.00 - 2.00 pm *Happy Hands* Toddler Group  
 3.00 - 7.30 pm Hildale School of Dancing  
 8.00 pm Wesley Guild (Oct-Apr)

### Wednesday

7.00 - 10.00 pm Alcoholics Anonymous

### Thursday

9.30 - 12.30 *Music Dreams* (for 0-2 years)  
 3.45 - 8.00 pm Hildale School of Dancing  
 8.00 - 9.30 pm Table Tennis

### Friday

8.00 pm Rochford Floral Group (2nd Friday of month)

### Saturday

9.00 am - 2.30 pm Hildale School of Dancing

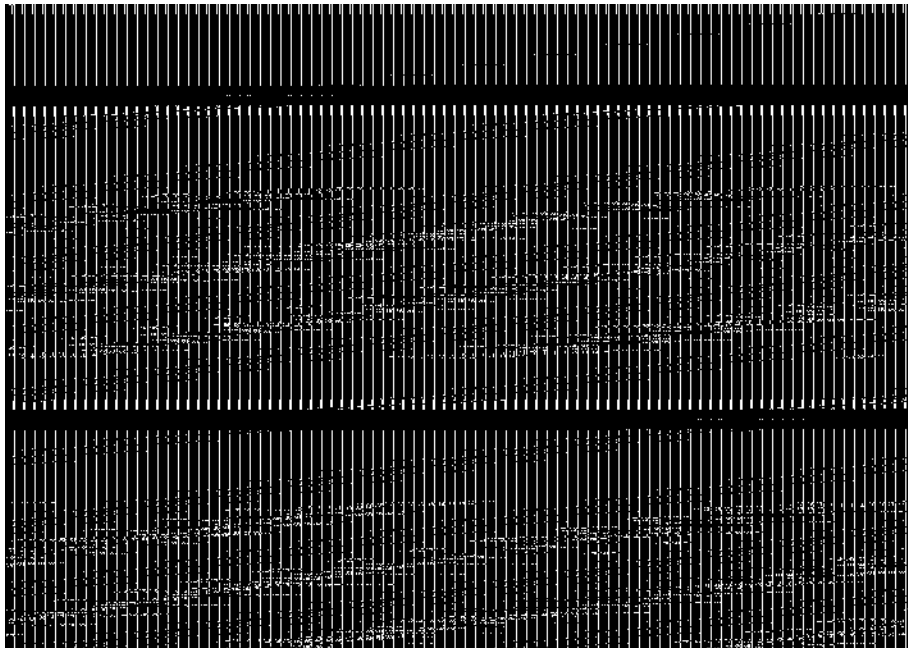
The premises are available for use outside the above times. Contact Margaret Rayner on 544252 for more information.

**And in addition . .**  
 Two open House Groups meet each month in a different place each time. One usually meets on the 1st Wednesday of the month and the other on the 3rd Wednesday. Listen out for the dates and venues.  
 A third House Group is for new members of the Church and is by invitation only.

# Church Wordsearch

This is another Wordsearch from *Teaching Ideas* and was found at [www.teachingideas.co.uk/index.shtml](http://www.teachingideas.co.uk/index.shtml).

On the grid, just find and mark the words shown at the bottom of the page. I've found at least one place name that doesn't appear on the list - if you find any more mistakes you should report them to *Teaching Ideas* - I refuse to accept any responsibility!



**AISLE**  
**ALTAR**  
**CANDLE**  
**CHALICE**  
**CHANCEL**  
**CHANDELIERS**  
**CHOIR STALLS**  
**CHURCH DOORS**

**CHURCHYARD**  
**CLOCK**  
**HASSOCKS**  
**HYMN BOOKS**  
**HYMN NUMBERS**  
**LADY CHAPEL**  
**LECTERN**  
**MAGAZINES**

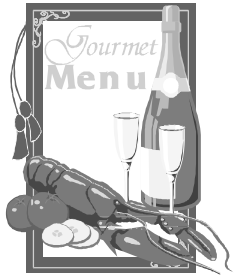
**NAVE**  
**PRAYER BOOKS**  
**ORGAN**  
**PEW**  
**PORCH**  
**SNUFFER**  
**VESTRY**

## Carole's Restaurant - open soon

Carole and Bruce are organising a couple of fund-raising meals to help towards clearing our debts from the building works (see *Time's running out*).

Places are limited and you will need to book in advance.

Notices will be appearing shortly giving more details and you should put your name against the date you want.



## Help wanted - but only for one hour

Volunteers are needed to help with a collection for NCH in Rochford Square or at Golden Cross on Saturday 22nd July from 9am - 12 noon.

You don't have to do the whole 3 hours as there will be a rota. So if you can spare just an hour, see Val as soon as possible and she will sort you out with all the necessary kit.

(We realise this will be the same day as the Big Clean, but we're sure we can still do both!)

## Grandma called it a Magic Lantern

For anyone who may lead a session of worship and wants to use sound and vision, there is a special presentation just for you

This will take place on 24th June from 2-5pm at Highlands and will be led by Rev Michael Hughes, and expert in using Multimedia in Worship.

If you're interested, see Mike Sims to book your place.

## Methodists pledge £300,000 in response to African food crisis

The Methodist Relief and Development Fund (MRDF) has committed £300,000 to food security programmes across East, West and Southern Africa, in response to the worsening food crisis in all three regions. The money will be spent on emergency relief, including feeding centres and medical care, as well as on longer-term initiatives to strengthen families' abilities to feed themselves.

The situation is currently most acute in East Africa, with Kenya, Ethiopia and Somalia all affected. Although rains have now arrived in parts of Kenya, the problems brought by drought are far from over. The heavy rainfall and drop in temperature have killed many cattle, already weakened by the long dry period. The bodies of cattle have then been swept into surface water sources, contaminating drinking water.

## Women's Fellowship

It's summer (despite what the weather tries to tell us!) and so we are on our monthly *Tea on the lawn* sessions. Everyone is welcome to come along at 2.30pm.

On July 10th, Gwenda will host our meeting at the church and on August 14th we will be at 21A Sutton Court Drive where Jean will be our host.

Our Autumn/Winter programme starts on 4th September with our own minister Brenda Gutberlet as our speaker and looks to be our usual interesting and varied range of Monday afternoons. There will be contributions from our own church members as well as visiting speakers. Topics range from people's life stories to watercolours, as well as fun afternoons and our time together filling the Samaritans Purse shoe boxes.

The full programme is on our website at [www.rochfordmethodist.org.uk](http://www.rochfordmethodist.org.uk)  
So book Monday afternoons in your diary now - 2.30pm sharp.



June	4	Sheila Webber
	11	Ida Hearn
	18	Helen Willson
	25	Jan Willson
	30	Carole Glendenning
July	2	Jean Startup
	9	Lucy Woods
	16	Beryl Scoging
	23	Margaret Rayner
	30	Win Bayford

## Family Fun Day

**Sunday 9th July**  
**11am - 3 pm**

A short Family Service ,  
followed by a picnic lunch with  
lots of outdoor fun, games and  
a chance to chat.

See posters and handbills for  
more information, but book the  
date NOW

## Methodist Web Radio

### Recent podcasts

The April 2006 podcast included an interview with Samantha Tuck about groundbreaking new projects to help the people of Ethiopia, Steve Hucklesby explained the importance of access to water as a basic human right and there was a trip to Bluewater to meet the chaplaincy team for Europe's largest shopping centre.

In the May 2006 podcast, His Eminence Sunday Mbang, head of the Methodist Church in Nigeria, was in the studio to talk about overcoming church conflict and faith boundaries, Tom Quenet from the World Church team spoke about seeing Jesus in unexpected places and, fresh from playing at Easter People, Christian rock band Tears of Solomon shared their thoughts on faith in a busy world.

To listen to these and future podcasts you need to download them to your PC or iPod. More information can be found at [www.methodist.org.uk/index.cfm?fuseaction=news.webradio](http://www.methodist.org.uk/index.cfm?fuseaction=news.webradio) where you can also find links to get the necessary software if you do not already have it.

## St Peter-on-the-Wall, Bradwell-on-Sea

The oldest church in England (it was founded by St Cedd in 654 AD), St Peter-on-the-Wall is best known for the annual Pilgrimage. This year's Pilgrimage takes place on 1st July and the theme is "Journeying with a Vision"; the speaker will be Brother Damian SSF Vicar of Holy Island Lindisfarne.

There is no parking near the Chapel but there is ample car parking a mile or so away at Bradwell village hall. Pilgrims assemble at the Bradwell village church of St Thomas for opening worship at 11am and then walk to St Peter's Chapel to enjoy a picnic on the grass and join in the open air service that starts at 1.15pm. There's music, dance, stalls and refreshments, in fact everything to make this a very special day for everybody. The day will end with a closing act of worship around 3.30pm.

If you can't get to the Pilgrimage but still want to worship at the chapel, there will be a series of Sunday services throughout July and August at 6.30pm to which everyone is welcome. The theme for these services will be *Sing a new song to the Lord* and they reflect the rich diversity of our Christian Tradition..

July	2	Praising God with the Harp (Annie Mawson)
	9	Praising God with the Camerata Singers
	16	Praising God World Music style (Prof Bill Tamblyn)
	23	Praising God with West Mersea Church Choir
	30	Praising God with the Othona Community
August	6	Praising God Celtic style (Revd Brigid and Laurie Main)
	13	Praising God Taizé style (Rev Genny Tunbridge)
	20	Praising God with the Tillingham Hand Bell Ringers
	27	Praising God with Andrew French and friends form West Mersea Free Church (with youngsters very much in mind)

Feel free to bring along a picnic and enjoy the peace and beauty of this ancient Holy Place  
Toilet facilities available. For more information about the services, ring 01621 776203.

## Property News

It's still been quiet on the Property front recently.

Several electrical sockets have been replaced thanks to Roy Pavitt, so if there's a socket you thought didn't work, it probably does now!

The CO<sub>2</sub> fire extinguisher by the main entrance has been stolen and a replacement is on order. If anyone has any idea how we can stop the replacement being stolen, but still make it easy to use when needed in an emergency we would love to know!

Any further ideas and suggestions (about anything at all to do with the buildings and grounds) would be welcomed - Val will keep a list for the Property Group to consider.

A meeting will be held in the next few days to discuss what needs to be done and this means Tuesday evenings will now be spent doing maintenance, so you can help by popping along from about 7.30 and wielding a tool, a paintbrush, or a teapot. (see the church notices for the actual start date).

And if you have any specialist skills that you want to offer, please don't wait to be asked!



**Calling all cleaners who want to stay on the rota - and new people who wish to join us**

A meeting will be held on Friday 14th July at 8pm at the Church to set up new groups, etc. For more information, see Val

- June 3 Mike & Heather Sims, Robert & Kathy Mortlock  
10 Judy Garner, Rosie Isaacs, Maureen Whalley, Ivy Blenkinsop, Sheila Webber  
17 Helen Willson, Jan Willson, Beryl Scoging, Mick Ellis  
24 Dave & Val Dobbin, Roy & Olive Pavitt, Gwenda Andrews
- July 1 Malcolm & Pat Rubidge, John & Marian Webb  
8 Colin & Margaret Rayner, Ron & Carol Castle  
15 Bruce & Carole Glendenning, George & Sue Edwards  
22 **BIG CLEAN**  
29 Mike & Heather Sims, Robert & Kathy Mortlock

Please note, Hildale Dancing School now finish at 2.30 on Saturdays.

## Wesley Guild

We are now into planning for next year, so it's time to book Tuesdays at 8pm over the winter months so you don't miss out.

To round off the end of our last year's programme we had our AGM and supper. After a record-breaking AGM (we finished in half an hour) we enjoyed a lovely meal.

Before that, on April 4th Helen (with help from Colin and Margaret) arranged a Beetle Drive which raised a useful sum for our Building Fund. Ros Bryant came along the following week and told us about how she became a teacher and gave a small insight into her work.

On Maundy Thursday Service we went to Stambridge Church and joined them in their devotions.

In a complete contrast, on the 18th Keith Leedham brought his Audio Visual Show and showed us a series of short 'films' he had made.

We are in our summer break now, but we will be back again on Tuesday 3rd October. Don't forget - Tuesdays at 8pm *sharp*.

Do you remember when Simon Gibson told us about his work on the Salvation Army Colony Farm and he told us about the boar they had there? There was a newspaper item recently where Simon had to give this boar an injection and it objected instinctively in the only way it knew. As a result, Simon was gored in the leg, but after treatment in Southend Hospital, Simon was soon back at work.

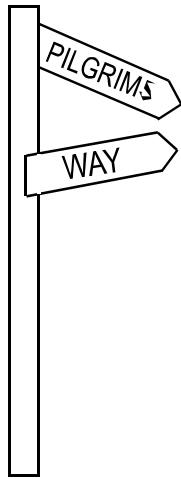


Remember, our benefactor has offered to double our fund-raising efforts towards clearing the loans on our building works, **but only for the year ending 31st August of this year**. He has offered to give one pound for each pound raised up to a maximum of £3000.

We want to make sure we get the maximum amount we can, but we are still a few hundred pounds short of

the £3000 so if you can arrange a fund raising event, please feel free. But don't leave it until the last minute; we don't want 15 events in the last week of August - it doesn't help to compete with other events either.

## Pilgrims Way



Since my last article we have met together as an Action team again and have progressed on several aspects of the action plans the Church Council have set us for the remainder of this church year. A key aspect was for us to agree our 'mission field', that is the homes we want to specifically target. Sonia has produced a list of all the new developments in the area at the moment, and we have decided to concentrate on these, plus our selected closest neighbours. This will eventually amount to around 350 dwellings, once they're all built.

Dave has done an excellent job in producing a "Welcome leaflet" for us. This will be placed in a special rack inside our premises for anyone to pick up. It gives

some brief details of the church, the activities that go on and Brenda's contact details. Initially we will produce 50.

We will use this welcome leaflet as the base for the publicity we want to distribute to the homes in our agreed mission field, as mentioned above. This will be planned from the beginning of September, specifically to publicize our Harvest Festival on 24<sup>th</sup>.

Our other major activity is to plan for the next Family Day on 9 July. We were very encouraged by the positive feedback we received from the last one we held on Palm Sunday, 9 April and we hope to build on this success for this next one. These services do seem to hit a chord with our non-regular attenders and contacts. Please pray diligently for us as we plan the service and events.

Finally, we are now considering the annual Pilgrims Way review, which is booked for 15 October. It will be a similar format to our big kick-off event (note my *only* reference to the World Cup!) we held last year, with lots of participation and opportunity to feedback on your thoughts for the last year and hopes for the coming one.

I make no apology for ending this article with an appeal for your continued prayers for Rochford Methodist Church as we proceed along the Pilgrims' Way. I believe that all our best efforts will come to nought without this essential prayer support.

## Stewards' Corner

Last time, Mike wrote that things had been quite busy; by contrast the last couple of months have been fairly quiet.

We had a further regular meeting with Brenda and the Stewards at Hockley and Rayleigh to firm up special services for the June/August quarter and to look forward to the September/November one.

Our Harvest Festival service will be on 24th September and our *Pilgrims Way* review meeting, like last year, will take place as part of an extended service on the morning of 15th October.

In view of the difficulties in finding local preachers over August (and because of low congregation numbers during this month) you can see from the recently issued Circuit Plan we have agreed that there will be no evening services at our church on 30th July, 6th and 13th August, but there will be services at Hockley. Similarly, we will have services on 13th and 27th August and we hope to welcome our friends from Hockley as they will not be having services at their church for the same reason.

At our recent Stewards Meeting, we discussed and planned who should lead the Local Arrangements for the next quarter, agreed for a further meeting to organise the *Family Day* on 9th July, reviewed the Stewards' rotas, reviewed the new housegroup (seems to be going well!) and looked at the options for an additional hymn book.

Our next meeting with Brenda will take place on 28th June where we will discuss (amongst other things) Sunday services from September 2006 to February 2007, so if you have a special service that needs to be slotted into the plan then have a word with a steward as soon as possible.

Just to remind you, your Stewards are Mike Sims (co-ordinator), Margaret Rayner, Sue Edwards, Dave Dobbin and John Webb.

## Open Gardens in Benfleet

On Saturday 1st July (10am - 5pm) and Sunday 2nd July (2 - 5pm), various people will be opening their gardens in order to raise funds for the continuing redevelopment of Benfleet Methodist Church. Programmes (£1 for adults, children free) will include a map and allow entrance to *all* the gardens. They will be available at any of the venues on the day, or in advance from John Downer at 54 Constitution Hill, Benfleet, SS7 1ED.

The gardens are at:

54 Constitution Hill	130 Oakfield Road
61 Croft Road	1 Sidwell Chase
22 Cumberland Avenue (Sat opening from 12 noon)	154 Thundersley Park Road
115 Cumberland Avenue	221 Vicarage Hill (Sunday opening from 12 noon)
17 Downesway	41 Borrowdale Road, Thundersley (off Church Road)
59 Grove Road	